

**Part Number:** Y-W-BAG

**Description:** Saddle Bags

**Fitment:** Yamaha Roadstar Warrior

**Revision:** 1



Tools Required	Parts List	
13mm Open wrench	1 #A00946 Right lower mounting bracket	6 3/8" Split lock washers
9/16" Open wrench	1 #A00945 Left lower mounting bracket	6 3/8" x 16 Chrome Acorn nuts
10mm Open wrench	1 #A00948 Saddlebag mounting bracket	2 1/4" x 20 x 3/4" Flat head Allen screws
5/8" Open wrench	1 #P10772 License Plate bracket	2 1/4" x 20 x 3/4" Chrome button head Allen screws
8mm Socket wrench	4 #P10779 Stainless steel studs	4 5/16 x 18 x 1 1/2" Hex head bolts
14mm Socket wrench	4 #P10778 Aluminum steel spacers	6 5/16" Chrome Flat washers
17mm Socket wrench	4 10mm x 60 Hex head bolts	2 5/16" Split lock washers
4mm Hex key (Allen wrench)	4 3/8" Flat washers (SP00172)	4 1/4" Chrome flat washers
5mm Hex key (Allen wrench)	6 3/8" Flat washers (SP00147)	2 1/4" x20 Nylock Nuts
6mm Hex key (Allen wrench)		

**NOTE:** We recommend the use of Loctite® or similar thread lock product when assembling parts on your motorcycle.

1. Start by removing the license plate bracket using a 8mm socket wrench and a 10mm open wrench (*Figure 1*). Discard bolts and bracket.



2. Install Corbin's license plate bracket (#P10772) and saddlebag mounting bracket (#A00948) and secure it with the supplied 1/4" x 20 x 3/4" flat head Allen screws, using a 4mm Allen wrench. Use Loctite® and tighten to 6 ft. lbs. (*Figure 2*)



**NOTE:** Make sure the tabs on the saddlebag mounting bracket #A00948 are parallel to the ground (*Figure 2*).

3. Install the license plate frame by using the supplied 1/4" x 20 x 3/4" button head cap screw and a 1/4" flat washer in the front of the license plate frame, then securing it with a 1/4" flat washer and 1/4" x 20 nylock nut. (*Figure 3*)



4. Using a 5mm Allen wrench, remove the two bolts on the fender strut (*Figure 4*). Discard the bolts and washers.



5. Replace the fender strut bolts with the supplied stainless steel studs and 5/16" flat washers. Use Loctite® and tighten to 12 ft. lbs. (*Figure 5*)

Repeat on the other side.

6. Remove the footpeg using a 6mm Allen wrench. Discard bolts. (*Figure 6*).

7. Install the Corbin lower brackets (#A00946-Right), (A00945-Left), by placing it behind the footpeg, then a spacer (#P10778) behind the Corbin bracket. Secure with the supplied 10mm x 60 hex head bolts and 3/8" flat washer (Figure 7).

**NOTE:** Snug the bolts down, but do not tighten until you secure the saddlebags onto the brackets.

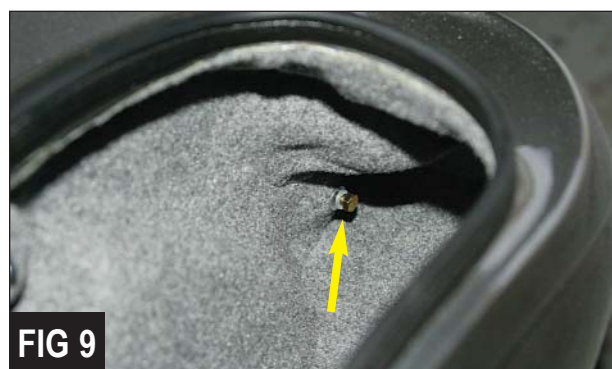
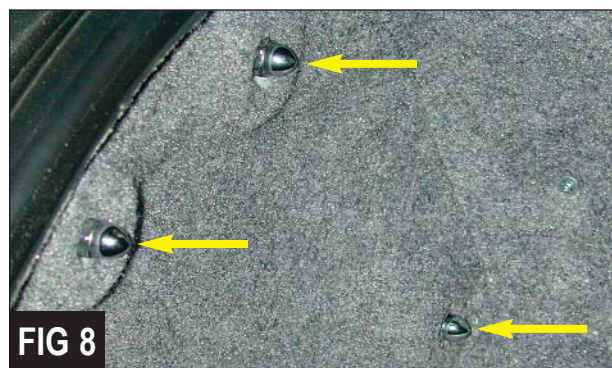
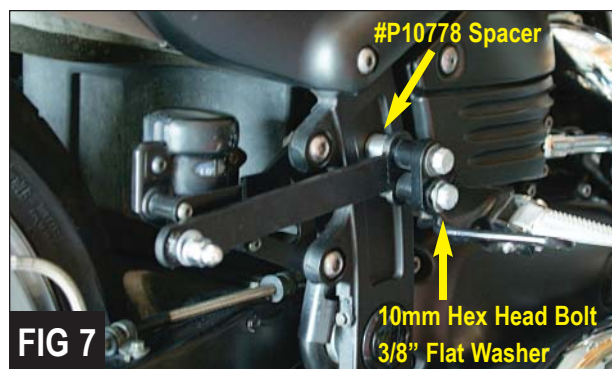
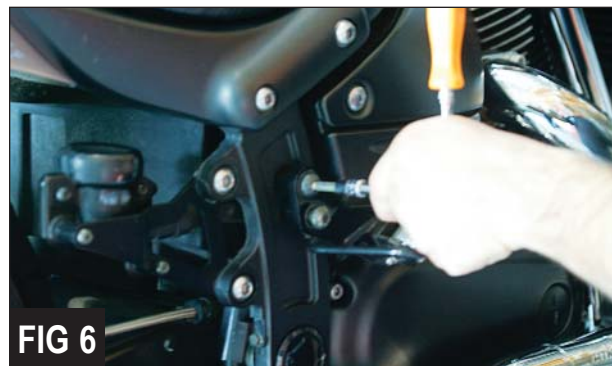
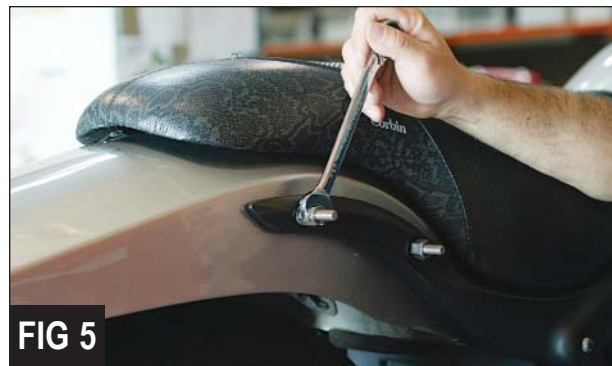
8. Repeat the lower bracket installation on the other side of the bike.

9. You are now ready to install the saddlebags. Carefully align the bags with the three mounting studs and secure with a 3/8" flat washer, 3/8" lock washer and 3/8" x 16 chrome acorn nut (Figure 8). Do not tighten yet. and again, we recommend the use of threadlock material.

10. Next secure the saddlebags to the saddlebag mounting bracket, using the supplied 5/16" x 18 x 1 1/2" hex head bolts, 5/16" lock washers and 5/16" flat washer (Figure 9). Tighten all bolts to 6 ft. lbs.

11. Go back and tighten the lower bracket mounts to 14 ft. lbs.

12. That's it, you're ready to roll. Have a great ride and keep the Corbin side up!



Questions? Give us a holler...  
**800-223-4332**  
tech@corbin.com