

Part Number: P-SS-BAG

Description: Saddle Bags

Fitment: 2015 Polaris Slingshot

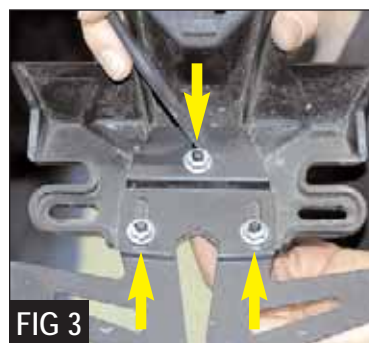
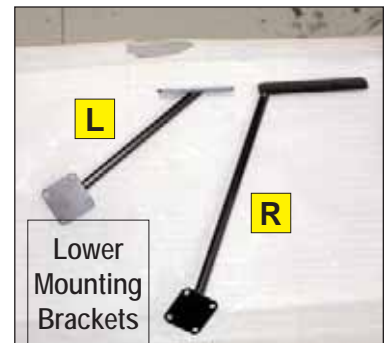
Revision: 2



| Tools Required | Parts List |
|--|--|
| 1/2" Socket 1/4" Ratchet Driver 4" Extension 6" Extension T40 Torx Bit 4mm Allen Wrench 5mm Allen Socket 13mm Deep Socket 8mm Deep Socket Loctite® 262 3" Hole Saw Hacksaw or plastic saw | 1 #A01230 Right Outer Bag Bracket 1 #A01231 Left Outer Bag Bracket 1 #A01232 Right Lower Bag Bracket 1 #A01233 Left Lower Bag Bracket 4 #SP02108 m6 x 16mm Hex Head Cap Screws (Fender) 8 #SP01080 m6 Flat Washers 2 #P11138 m6 x 60 Socket Head Cap Screws (Uppers Custom) 2 #SP02099 m6 x 60 Socket Head Cap Screws (Uppers) 4 #SP02100 m6 x 30 Socket Head Cap Screws (Lowers) 1 #P11129 w/ m8 x 60 bolt 8 #SP01099 5/16" -18 Hex Head Bolts (Lowers Bag Side) 8 #SP00215 5/16" Flat Washers 2 #P20169 Large Spacers 2 #P10071 Small Spacers 4 #SP00139 1/4"-20 x 1/2 Button Head Cap Screws (License Bracket) 2 #SP00076 m8 Nylock Nuts 2 #SP00296 m8 Flat Washers 4 #SP00198 3/8" Acorn Nuts 4 #SP00265 3/8" Flat Washers 4 #SP00157 3/8" Split Washers 4 #SP00123 1/4-20 Nylock Nuts |

NOTE: For demonstration purposes only, the Slingshot is shown without the rear wheel and on a car lift.

1. Unplug the license plate light by prying up the tab with a small screwdriver. (Figure 1)
2. Remove the three bolts on the license plate bracket, using a T30 Torx bit (Figure 2).
3. Using a 11mm socket wrench, remove the three bolts on the reflector bracket to gain access to the license plate light (Figure 3).
4. Remove the license plate light from the license plate bracket (Figure 4), using an 8mm deep socket wrench and install it onto the Corbin fender and secure with the stock bolts and flat washers (Figure 5).
5. Remove the eight bolts on the upper rear cowl, using a T40 torx bit (Figure 6) and then pop the cowl off (Figure 7).
6. Using the supplied template, cut the ends of the cowl and cut the holes on the cowl. (Figure 8)
7. In order to disassemble the tail light, you will need to remove the two T-30 Torx, two 10mm bolts, and an additional T-30 Torx located towards the front of the tail light. Discard the 10mm bolts. You will be replacing them with our supplied hardware (Figure 9).



8. Lift up on the body of the Slingshot slightly (*Figure 10*), pull out the taillight to disengage and unplug.

9. To install the upper right bracket, put the right bracket into position, under side of frame where you took out the taillight (*Figure 11*), then place the custom bolt into the "V" part of the frame (*Figure 12*) and secure with the supplied flat washer and nylock nut (*Figure 13*). **Do Not Tighten Yet!**

NOTE: While installing the custom bolt into the "V" part of the frame, be careful to not pinch any wires. Push the wires out of the way before tightening the bolt.

10. Plug in the right taillight and pop it back into place, engaging the right of the taillight first.

11. To secure bracket and light housing, we supplied two m6-1.0 x 60 socket head cap screws. One is modified (*Figure 14*) and the other is not. Each screw must go through the bracket, frame and up into the light housing. Do not tighten the bolts until all bolts are in place.

12. Secure the left side of the right bracket with the non-modified socket screw, using a 5mm Allen wrench. Secure the right side of the right bracket with the modified socket screw, using a 5mm Allen wrench (*Figure 15*).

13. Secure taillight on ends with stock torx bolts.

14. Now go back and tighten the bolts in the following order. Stock bolts, non-modified, modified and nylock nut.

NOTE: You will not be reusing the long hex head bolts from the taillight.

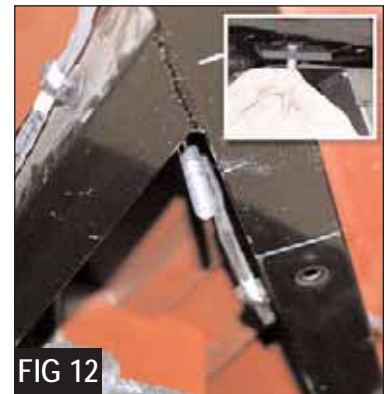
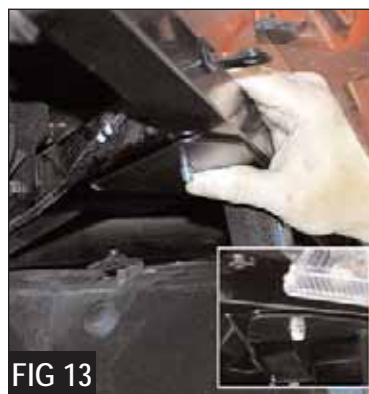
15. Repeat on the other side of car.

16. For the lower right bracket, remove the screws on the lower right cover, using a T40 torx wrench (*Figure 16*).

17. Install the lower right bracket and secure using the supplied m6 x 30 Allen head cap screws, flat washer and small spacer (*Figure 17*). Use Loctite® and do not tighten yet.

18. For the lower left bracket, remove the center bolt and left bolt on the center panel (*Figure 18*).

19. Install the left center bracket and secure using the supplied m6 x 30 Allen head cap screws, washers and large spacer. Use Loctite® and do not tighten yet (*Figure 19*).



20. Re-install the upper rear cowl and secure with the stock bolts.

21. Install the stock center bolt where you removed the license plate frame (*Figure 20*).

22. Install the Corbin fender where you removed the license plate frame. First plug in the license plate light and then secure with the stock bolts, using a T30 torx wrench (*Figure 21*).

23. Install the saddlebags by lining up the holes in the bags to the mounting points on the right or left top bracket. Secure the upper mounting points with the supplied 3/8" washer, lock washer and acorn nut (*Figure 22*), using a 3/8" socket wrench. Secure the bottom mounting points with the supplied 5/16" washer and hex head bolts (*Figure 23*), using a 1/2" socket wrench. Secure the bag to the fender, using the supplied m6 x 16mm hex head cap screws and flat washers (*Figure 24*), using a 4mm Allen wrench and Loctite®.

24. Now go back and tighten the lower mount and fender bolts.



FIG 15



FIG 16



FIG 17

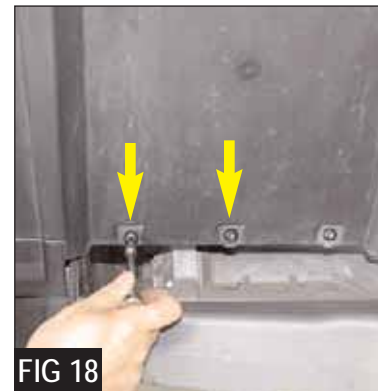


FIG 18



FIG 19

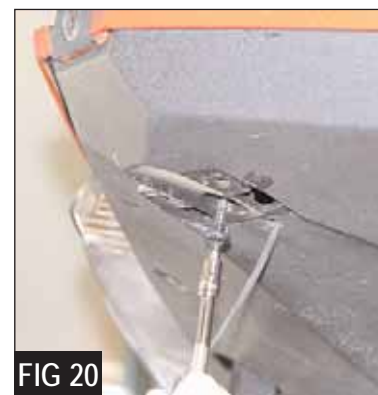


FIG 20



FIG 21

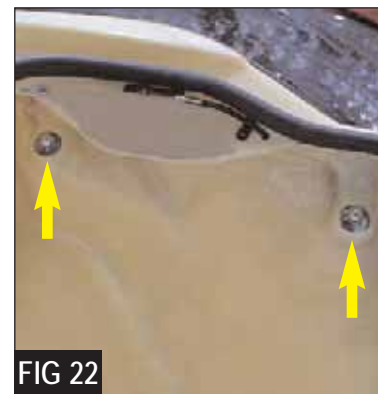


FIG 22



FIG 23

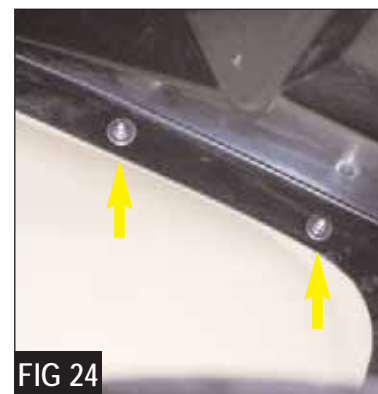


FIG 24

Questions? Give us a holler...

800-223-4332

tech@corbin.com